

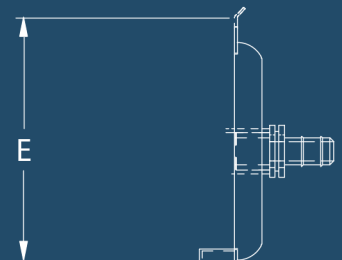
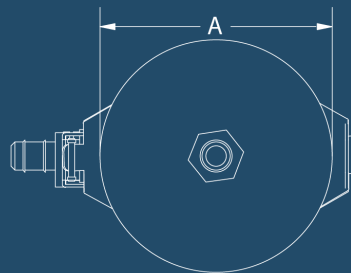
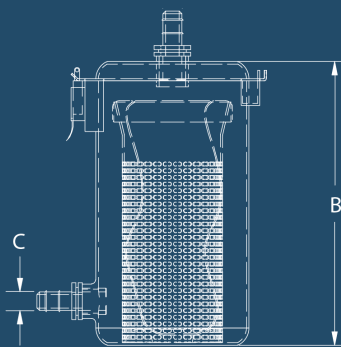
Coffee Guardian ST Range Brochure



Side View

Front View

Lid Clearance



Model	Width (A)	Height (B)	Inlet / Outlet (C)	Width (D)	Minimum Clearance (E)	Strainer Capacity
ST2 Mini	114.6	235	16/20	N/A	145	0.6 l
ST2	114.6	330	16/20	N/A	230	1 l
ST4	250	355	48.3	250	210	4 l
ST8	300	400	60.1	300	360	8 l

All dimensions in mm. Inlet / outlet height from the bottom of the pipe.

Coffee Guardian How it Works

Coffee Filtration Sock

The Coffee Guardian filter sock is inserted into an internal steel mesh in order to separate used coffee grounds from waste water.

Reduced Outlet Height

The Coffee Guardian comes with a reduced outlet height to prevent the build up of milk & water in the unit, which might otherwise generate smells.

Flexi Pipe Connections

The inlet on the lid connects to flexi pipework from the sink or coffee machine, with wall mounted brackets included for under-counter installations.



Robust stainless steel construction

Optional mesh basket for fine food

Strainer basket option for ST4 & 8

Collected waste can be recycled

Protects drains (point of source)

Low outlet versions available

Easy to install and maintain

Extended warranty options

Ideal for coffee machines

No need for drain dosing

Re-usable filtration socks

Captures coffee grounds

Specification

16 Gauge 304 Stainless Steel.

RGR Facilities Ltd

Unit 1C Westpoint
36-37 Warple Way
London, W3 0RG

T : 020 7221 6094

M : 077 1564 3579

W : rgrfacilities.co.uk